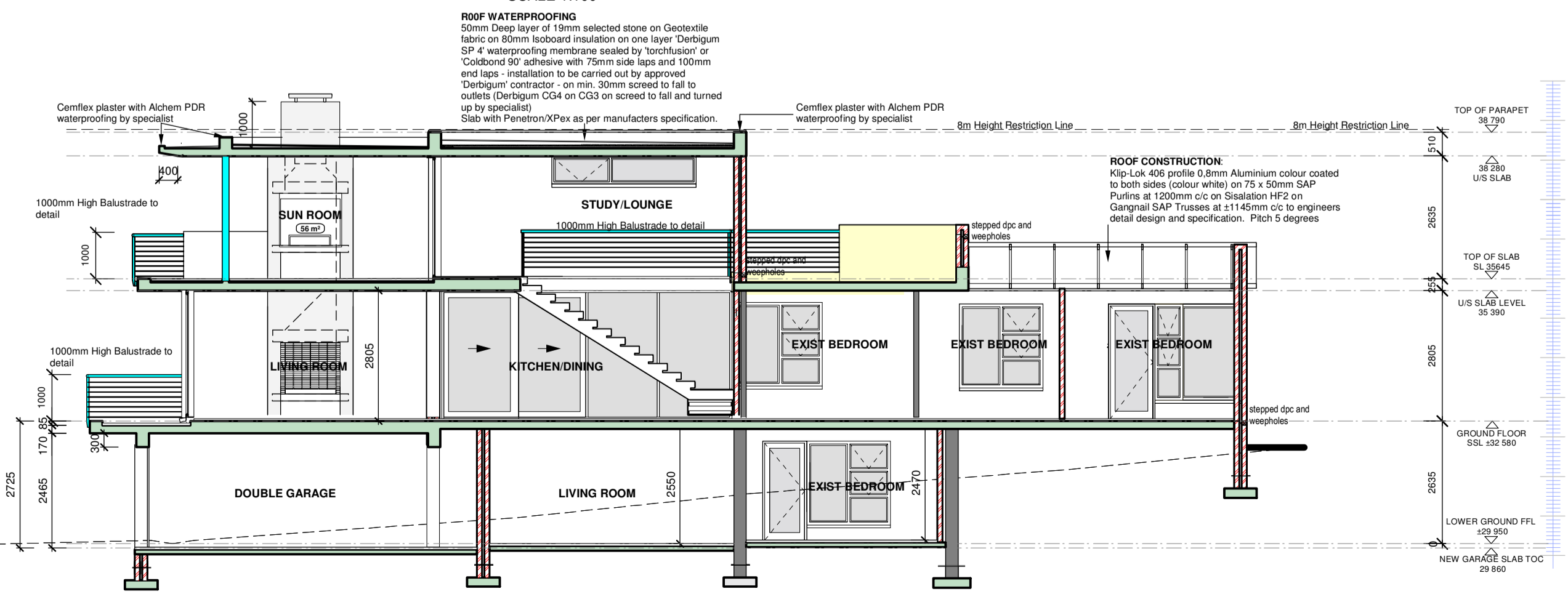
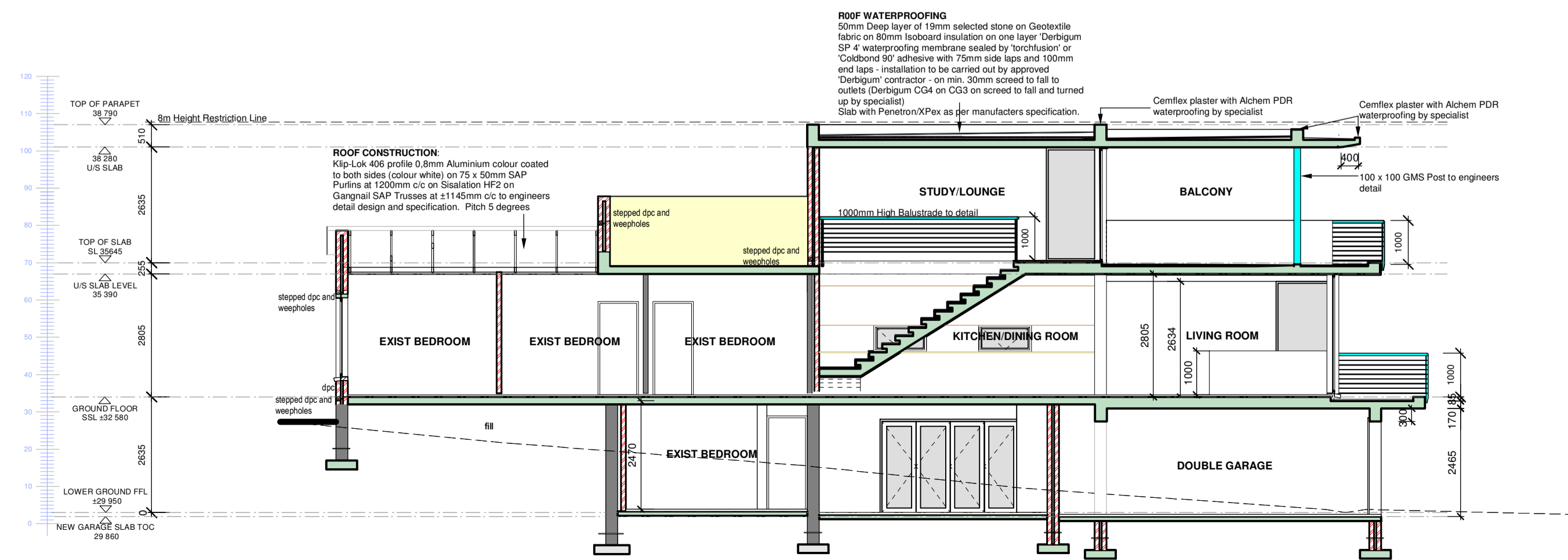
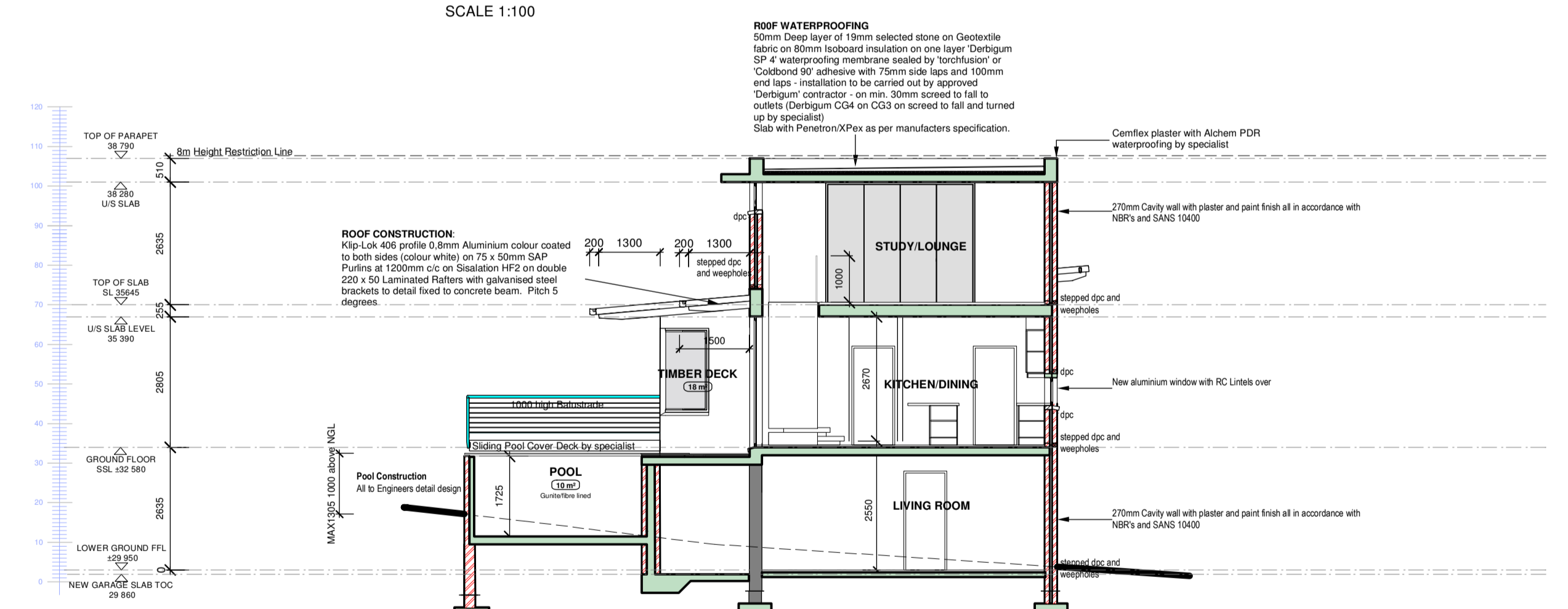
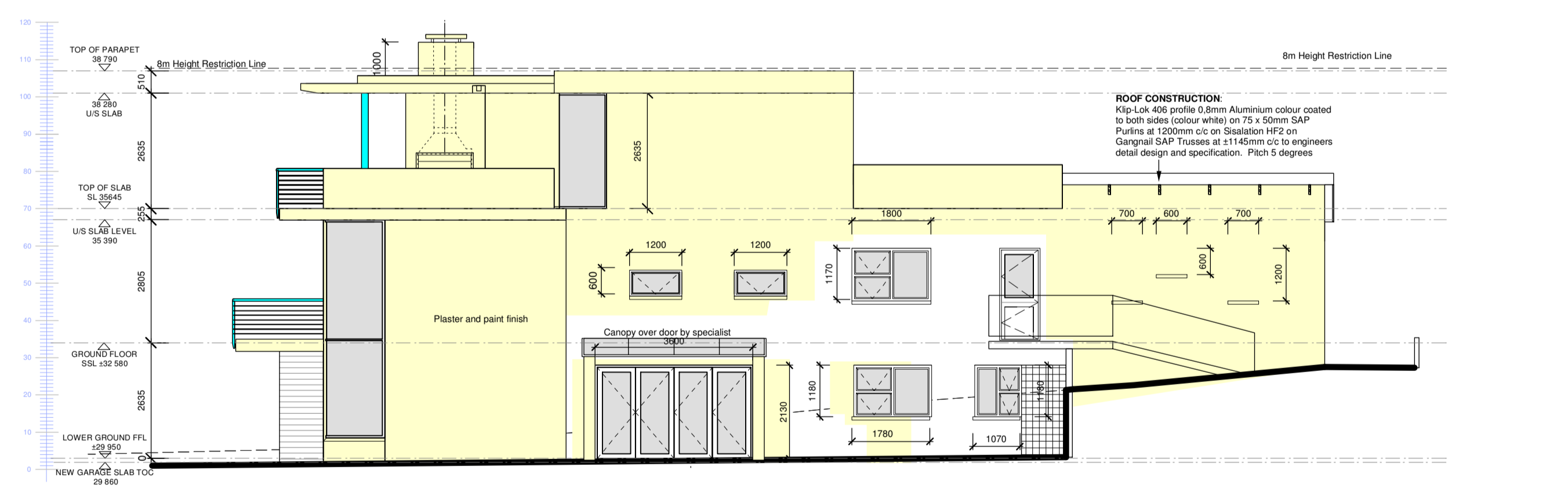
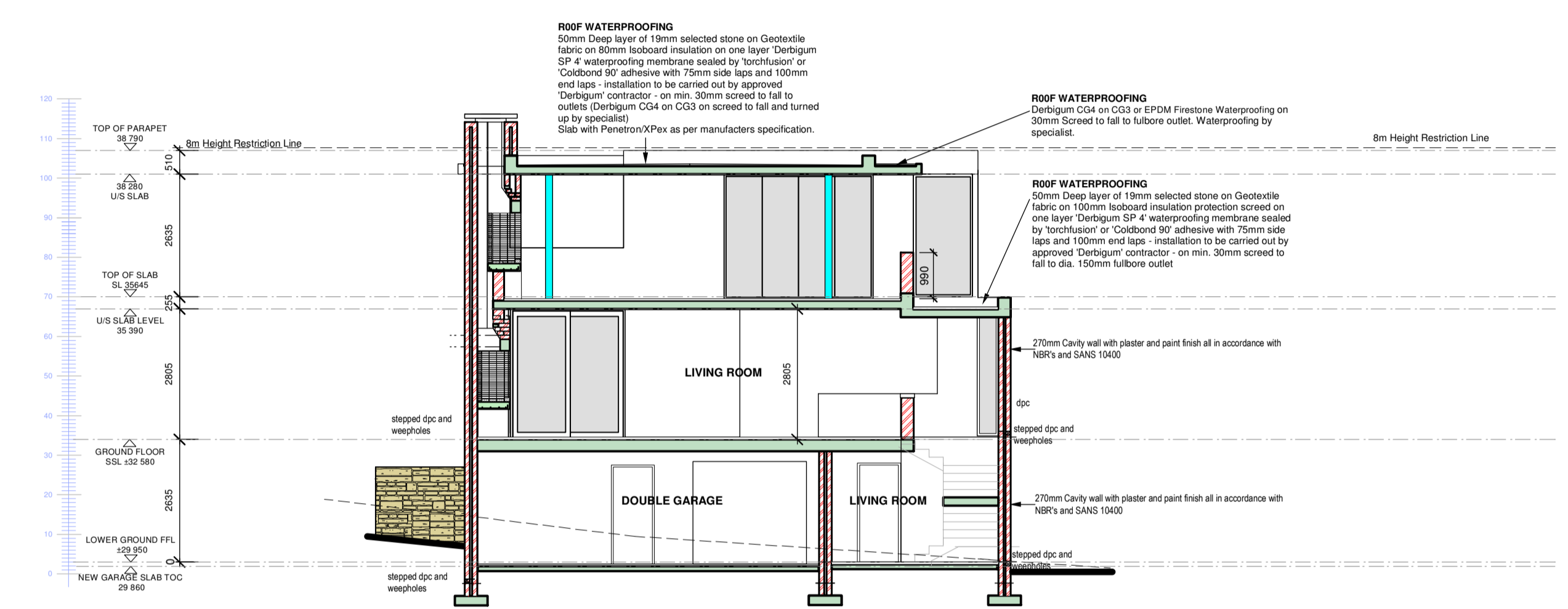
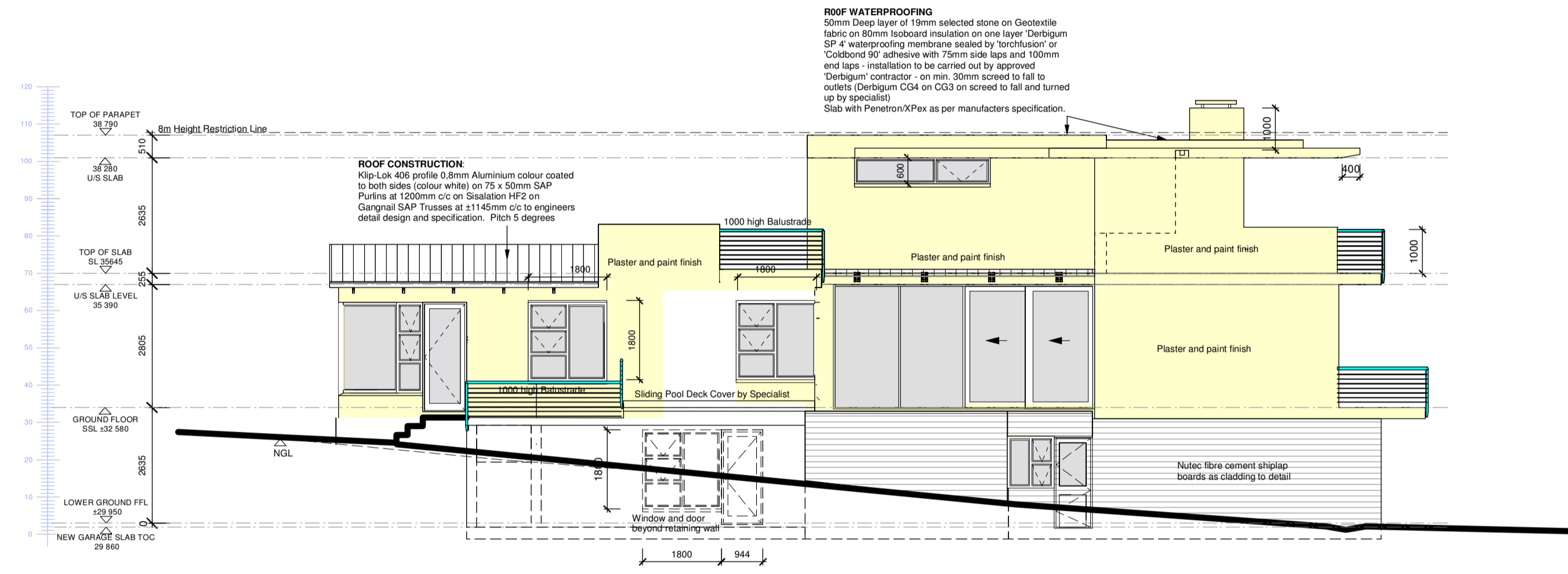




All levels, dimensions, gradients and steps to be checked and verified on site prior to commencement of any works.



**SANS 1005-X4 DEEMED TO SATISFY REGULATIONS**

**REGULATION 4.1 - WIND RESISTANCE**  
The total water vapour and wind speed with SANS 1005, SANS 1016, SANS 1024 and SANS 1025 at all wind zones shall be checked and recorded in a minimum of 1000 Pa.

**REGULATION 4.2.1.8 - BUILDING ENVELOPE**

**1. BUILDING CLASSIFICATION:** 4

**2. CLIMATIC ZONE IN R.S.A:** 4

**3. ORIENTATION & SHADING:**  
Building is oriented SOUTH WEST and NW between the SOUTH West Sector due to existing existing of existing roads.  
Living spaces are angled in Puff Bay county to SOUTH WEST orientation due to the existing orientation of the house.

**4. EXTERNAL ENVELOPE WALLS - REGULATION 4.2.2:**  
External Envelope Walls are constructed in accordance with SANS 1005-X4.

**FENESTRATION REQUIREMENTS**

1st window at level ground floor	18 84
2nd floor area at level ground floor	150
1st window at ground floor	78 81
2nd floor area at ground floor	174
1st window at 1st floor	14 3
2nd floor area at 1st floor	36
Window area	112 15
Window area	34
Building Penetration Percentage	37% (This calculation is per SANS 1005-X4 and is based on design conditions)

**6. ROOF CONSTRUCTION - REGULATION 4.2.5:**  
Roof not shown - selection subject to be more than 50mm as per SANS 1005-X4 and SANS 1006 - 100mm Iso-board or 100mm Iso-board on one layer Derbigum SP 4 waterproofing membrane sealed by torchfusion or Colbond RP adhesive with 75mm side laps and 100mm end laps - installation to be carried out by approved Derbigum contractor - on min. 30mm screed to fall to outlets (Derbigum CG4 on CG3 on screed to fall and turned up by specialist).  
Slab with PenetronXPex as per manufacturers specification.

**ROOF WATERPROOFING**  
50mm Deep layer of 19mm selected stone on Geotextile fabric on 80mm Iso-board insulation on one layer Derbigum SP 4 waterproofing membrane sealed by torchfusion or Colbond RP adhesive with 75mm side laps and 100mm end laps - installation to be carried out by approved Derbigum contractor - on min. 30mm screed to fall to outlets (Derbigum CG4 on CG3 on screed to fall and turned up by specialist)  
Slab with PenetronXPex as per manufacturers specification.

**ROOF WATERPROOFING**  
50mm Deep layer of 19mm selected stone on Geotextile fabric on 80mm Iso-board insulation on one layer Derbigum SP 4 waterproofing membrane sealed by torchfusion or Colbond RP adhesive with 75mm side laps and 100mm end laps - installation to be carried out by approved Derbigum contractor - on min. 30mm screed to fall to outlets (Derbigum CG4 on CG3 on screed to fall and turned up by specialist)  
Slab with PenetronXPex as per manufacturers specification.

**ROOF WATERPROOFING**  
50mm Deep layer of 19mm selected stone on Geotextile fabric on 80mm Iso-board insulation on one layer Derbigum SP 4 waterproofing membrane sealed by torchfusion or Colbond RP adhesive with 75mm side laps and 100mm end laps - installation to be carried out by approved Derbigum contractor - on min. 30mm screed to fall to outlets (Derbigum CG4 on CG3 on screed to fall and turned up by specialist)  
Slab with PenetronXPex as per manufacturers specification.

**ROOF WATERPROOFING**  
50mm Deep layer of 19mm selected stone on Geotextile fabric on 80mm Iso-board insulation on one layer Derbigum SP 4 waterproofing membrane sealed by torchfusion or Colbond RP adhesive with 75mm side laps and 100mm end laps - installation to be carried out by approved Derbigum contractor - on min. 30mm screed to fall to outlets (Derbigum CG4 on CG3 on screed to fall and turned up by specialist)  
Slab with PenetronXPex as per manufacturers specification.

**ROOF WATERPROOFING**  
50mm Deep layer of 19mm selected stone on Geotextile fabric on 80mm Iso-board insulation on one layer Derbigum SP 4 waterproofing membrane sealed by torchfusion or Colbond RP adhesive with 75mm side laps and 100mm end laps - installation to be carried out by approved Derbigum contractor - on min. 30mm screed to fall to outlets (Derbigum CG4 on CG3 on screed to fall and turned up by specialist)  
Slab with PenetronXPex as per manufacturers specification.

**ROOF WATERPROOFING**  
50mm Deep layer of 19mm selected stone on Geotextile fabric on 80mm Iso-board insulation on one layer Derbigum SP 4 waterproofing membrane sealed by torchfusion or Colbond RP adhesive with 75mm side laps and 100mm end laps - installation to be carried out by approved Derbigum contractor - on min. 30mm screed to fall to outlets (Derbigum CG4 on CG3 on screed to fall and turned up by specialist)  
Slab with PenetronXPex as per manufacturers specification.

**ROOF WATERPROOFING**  
50mm Deep layer of 19mm selected stone on Geotextile fabric on 80mm Iso-board insulation on one layer Derbigum SP 4 waterproofing membrane sealed by torchfusion or Colbond RP adhesive with 75mm side laps and 100mm end laps - installation to be carried out by approved Derbigum contractor - on min. 30mm screed to fall to outlets (Derbigum CG4 on CG3 on screed to fall and turned up by specialist)  
Slab with PenetronXPex as per manufacturers specification.

**ROOF WATERPROOFING**  
50mm Deep layer of 19mm selected stone on Geotextile fabric on 80mm Iso-board insulation on one layer Derbigum SP 4 waterproofing membrane sealed by torchfusion or Colbond RP adhesive with 75mm side laps and 100mm end laps - installation to be carried out by approved Derbigum contractor - on min. 30mm screed to fall to outlets (Derbigum CG4 on CG3 on screed to fall and turned up by specialist)  
Slab with PenetronXPex as per manufacturers specification.

**ROOF WATERPROOFING**  
50mm Deep layer of 19mm selected stone on Geotextile fabric on 80mm Iso-board insulation on one layer Derbigum SP 4 waterproofing membrane sealed by torchfusion or Colbond RP adhesive with 75mm side laps and 100mm end laps - installation to be carried out by approved Derbigum contractor - on min. 30mm screed to fall to outlets (Derbigum CG4 on CG3 on screed to fall and turned up by specialist)  
Slab with PenetronXPex as per manufacturers specification.

**ROOF WATERPROOFING**  
50mm Deep layer of 19mm selected stone on Geotextile fabric on 80mm Iso-board insulation on one layer Derbigum SP 4 waterproofing membrane sealed by torchfusion or Colbond RP adhesive with 75mm side laps and 100mm end laps - installation to be carried out by approved Derbigum contractor - on min. 30mm screed to fall to outlets (Derbigum CG4 on CG3 on screed to fall and turned up by specialist)  
Slab with PenetronXPex as per manufacturers specification.

**ROOF WATERPROOFING**  
50mm Deep layer of 19mm selected stone on Geotextile fabric on 80mm Iso-board insulation on one layer Derbigum SP 4 waterproofing membrane sealed by torchfusion or Colbond RP adhesive with 75mm side laps and 100mm end laps - installation to be carried out by approved Derbigum contractor - on min. 30mm screed to fall to outlets (Derbigum CG4 on CG3 on screed to fall and turned up by specialist)  
Slab with PenetronXPex as per manufacturers specification.

**ROOF WATERPROOFING**  
50mm Deep layer of 19mm selected stone on Geotextile fabric on 80mm Iso-board insulation on one layer Derbigum SP 4 waterproofing membrane sealed by torchfusion or Colbond RP adhesive with 75mm side laps and 100mm end laps - installation to be carried out by approved Derbigum contractor - on min. 30mm screed to fall to outlets (Derbigum CG4 on CG3 on screed to fall and turned up by specialist)  
Slab with PenetronXPex as per manufacturers specification.

**ROOF WATERPROOFING**  
50mm Deep layer of 19mm selected stone on Geotextile fabric on 80mm Iso-board insulation on one layer Derbigum SP 4 waterproofing membrane sealed by torchfusion or Colbond RP adhesive with 75mm side laps and 100mm end laps - installation to be carried out by approved Derbigum contractor - on min. 30mm screed to fall to outlets (Derbigum CG4 on CG3 on screed to fall and turned up by specialist)  
Slab with PenetronXPex as per manufacturers specification.

**ROOF WATERPROOFING**  
50mm Deep layer of 19mm selected stone on Geotextile fabric on 80mm Iso-board insulation on one layer Derbigum SP 4 waterproofing membrane sealed by torchfusion or Colbond RP adhesive with 75mm side laps and 100mm end laps - installation to be carried out by approved Derbigum contractor - on min. 30mm screed to fall to outlets (Derbigum CG4 on CG3 on screed to fall and turned up by specialist)  
Slab with PenetronXPex as per manufacturers specification.

**celia falkenberg architects**  
March (A.A. London) & April (J.L.T.) Pr. Arch SACAP No 6334  
in partnership with  
*Janda Macdonald* ARCHITECT  
JANDA MACDONALD (Arch) Pr Arch SACAP Reg no 6983  
address: 13(b) helderzicht road, somerset west, 7130  
cell: 082 465 3710 email: celia@falkenberg.co.za  
web: www.farchitects.co.za

**Planning Worx**  
Suite 5b, 1st Floor, Elwell Centre  
14 Galesdome Street, Somerset West 7130  
South Africa  
Tel: +27 (0)21 851-4215  
Fax: 0035312291  
info@planningworx.co.za  
SACAP REG NO: 510597

**PROJECT**  
**RESIDENCE COETZEE**  
ERF 3789, 8TH STREET, VOELKLIP HERMANUS

**DRAWING**  
**PLAN, SECTIONS AND ELEVATIONS**

SCALE	DATE	DRAWN
1:100	JUNE 2014	DW
PROJECT NUMBER	DRAWING NUMBER	REVISION
0/198	1.2	L
SHEET NUMBER	2 of 4	