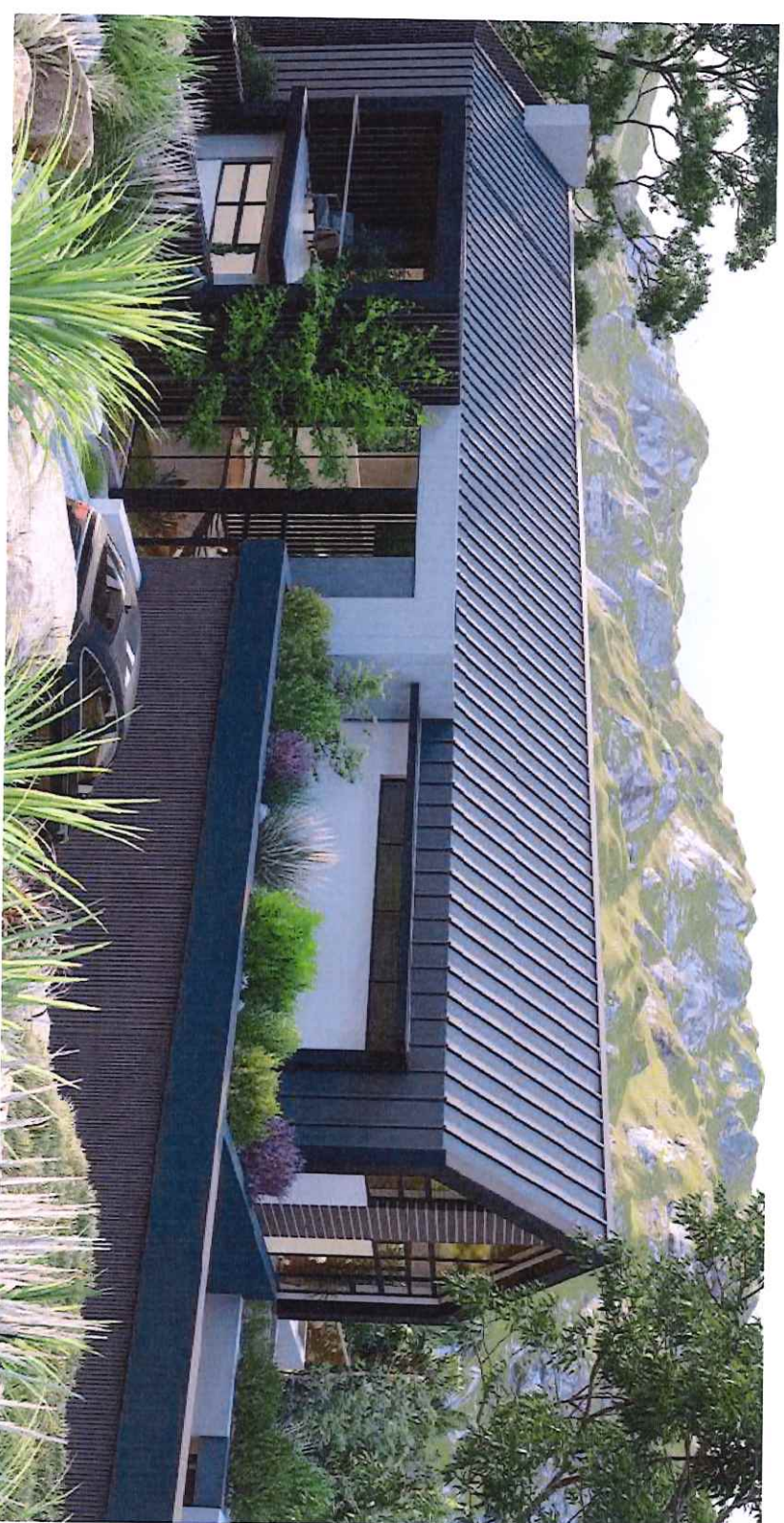


**BFAU PART**

HOUSE D6  
PEZULA PRIVATE ESTATE



# HOUSE D6 – PEZULA PRIVATE ESTATE

540 sqm house on a 4753.21 sqm plot in the beautiful and secure Pezula Private Estate.

- 3 En-Suite Bedrooms
- Open plan Living & Dining Area
- Open Plan Kitchen with Laundry Room
- Pajama Lounge
- Studio
- Study
- 2 x Enclosed Patios with Braai Boma & Swimming Pool
- 5000L Rainwater Harvesting Tank
- Energy Smart
  - Back Up Battery & Inverter
  - Solar Ready
  - Gas Water Heating
  - Gas Oven & Hob
- Designer Landscaping
- Optional Interior design and furniture from Bauhause



\*Renders differ from final plans. Final plans can be provided on request.

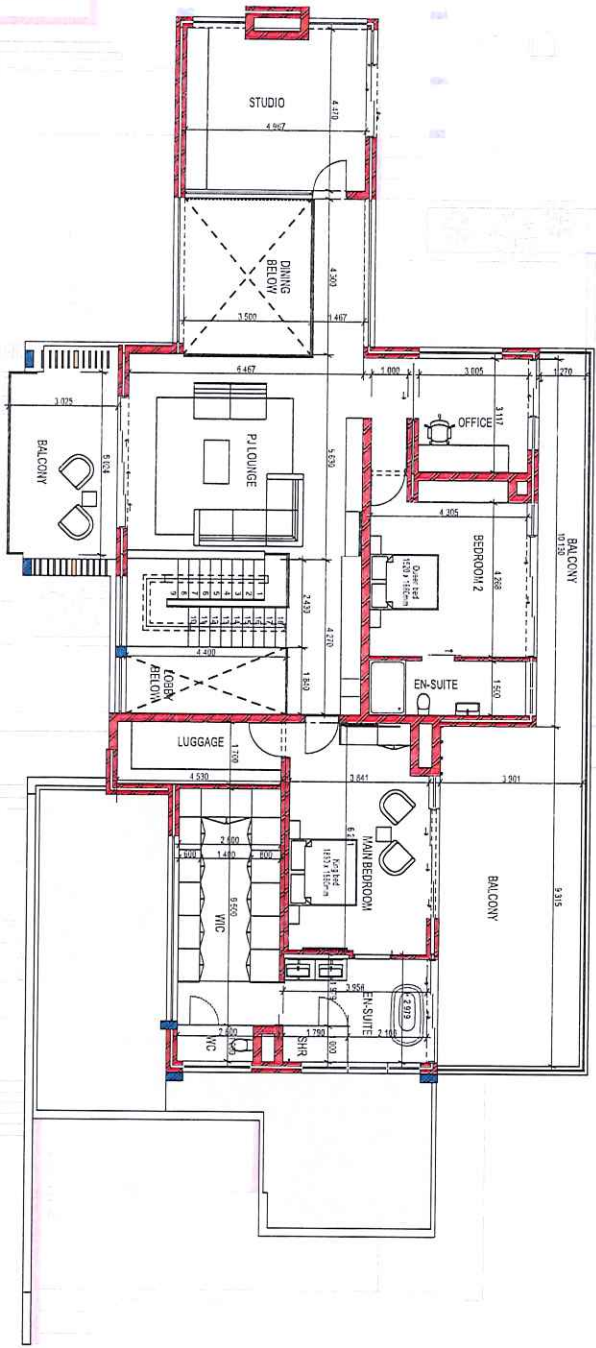


# PLANS

- Ground Floor Plan
- First Floor Plan







**FIRST FLOOR PLAN**  
Scale 1:100

2022-03-07 Rev II

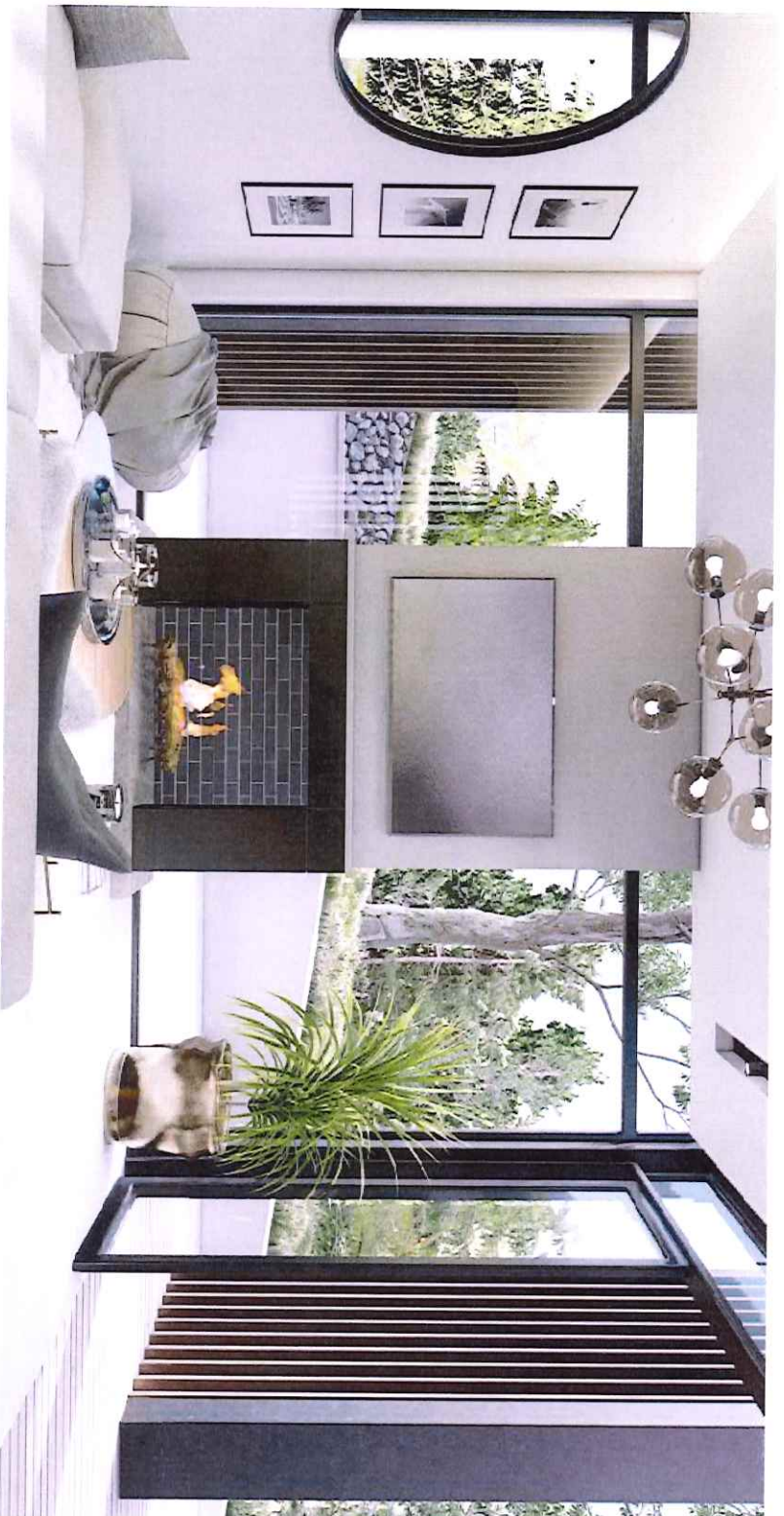


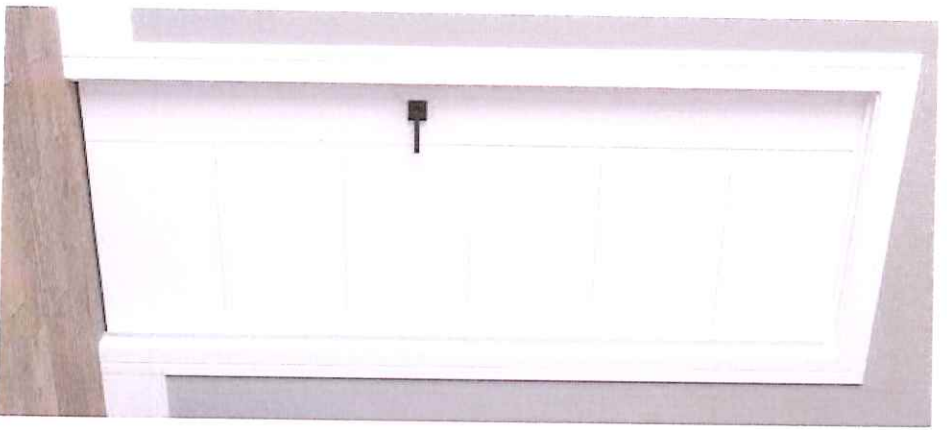






# FINISHINGS





Doors & Skirtings



Colour Palette



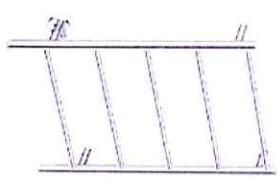
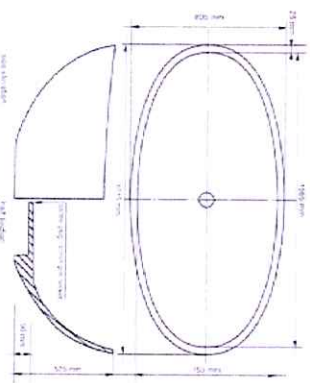
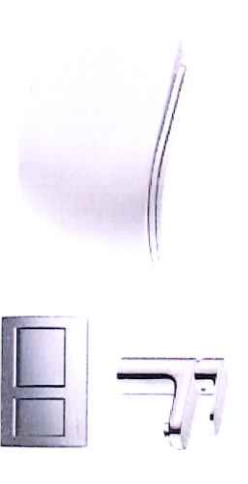
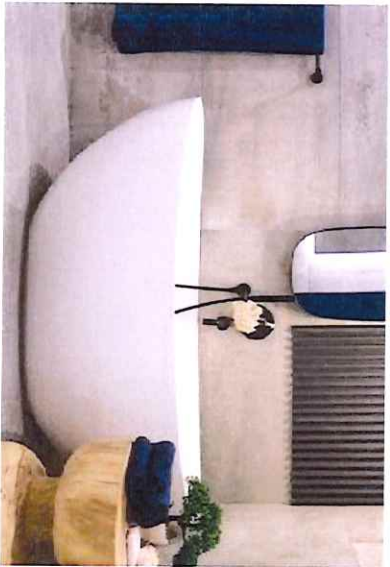
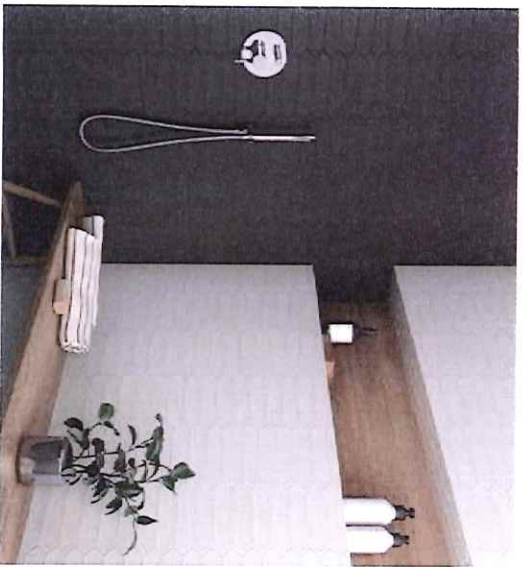
Floor Tiles - Patios



Wall Tiles



Italian Oak Vinyl Flooring



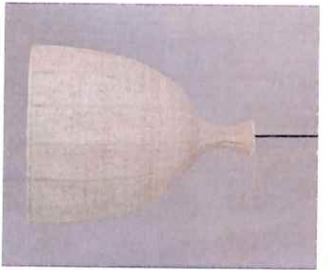
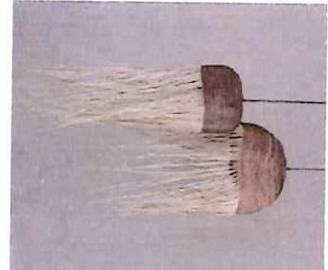
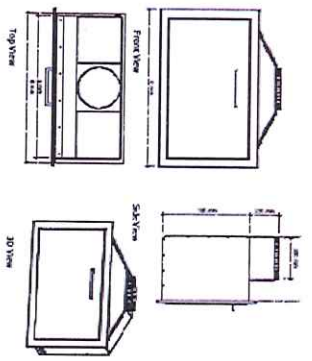
Braai & Fireplace



Downlighters - White Coastal



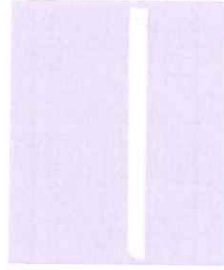
Pendant Options



Prep Bowl & Sink Area



Garage Lighting



Exterior Finishes & Specifications



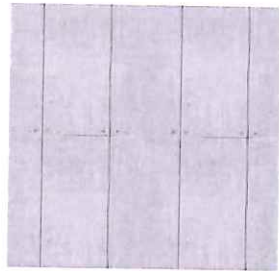
Smooth plaster  
painted Plascon  
Approved colours



Surface mounted  
glass railing



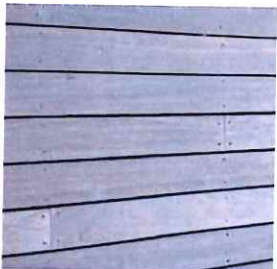
Aluminium power  
coated - Charcoal



ABE Earthcoat  
cementitious plaster  
or Mapei skim coat



Natural stone  
cladding



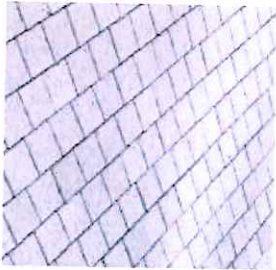
Weathered Grappa  
hardwood decking



Safintra safflock 700  
colourplus - Charcoal



9mm grey stone chips  
on derbigum



Smooth seamless  
cobble paving



Planted ribbon natural  
concrete driveway



Low mounted wall  
light

# CONTACT US:

## OFFICE:

044 851 0153  
admin@bauart.co.za

[www.bauart.co.za](http://www.bauart.co.za)

Follow us on social media:

