

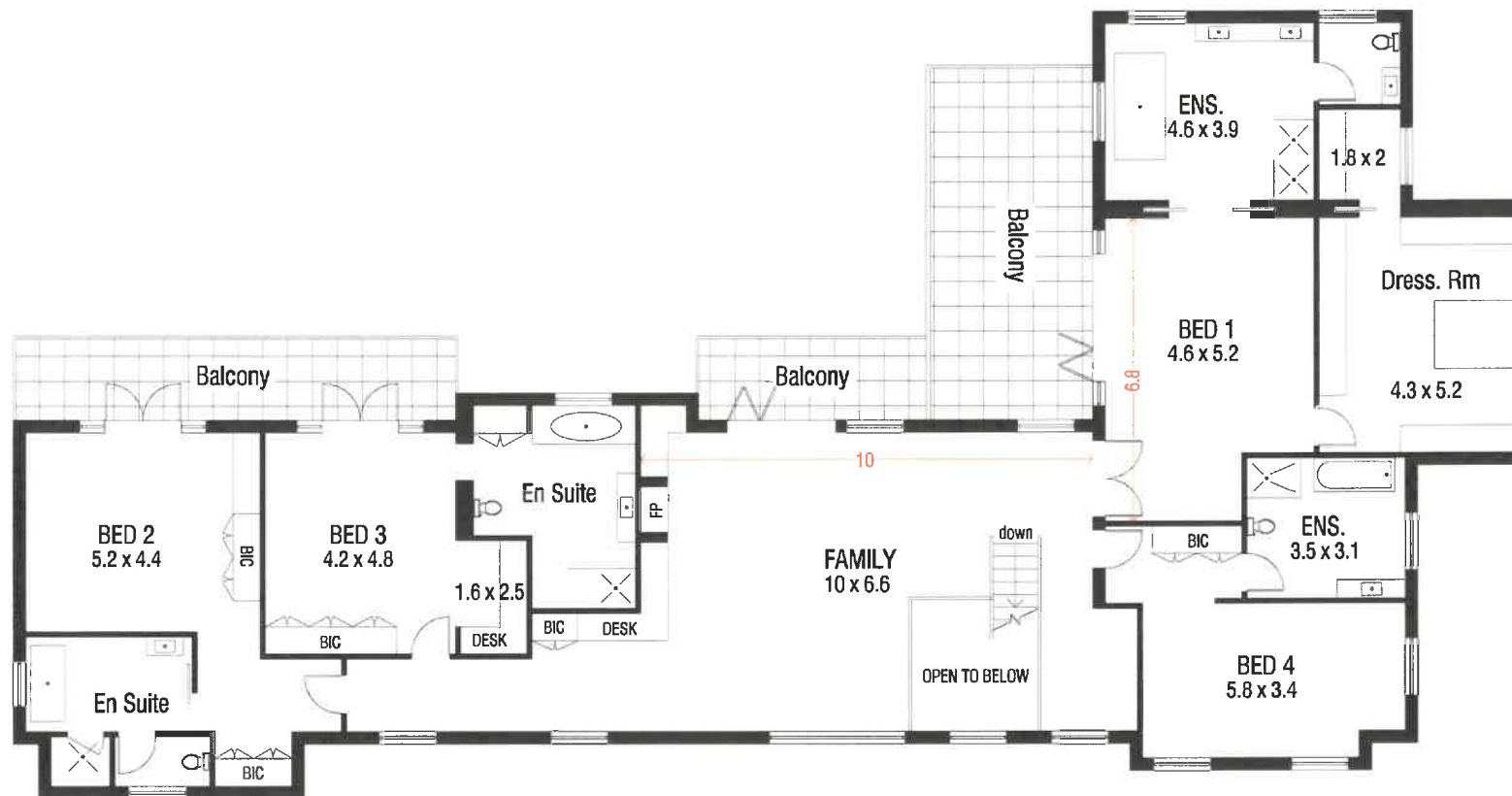
Accuracy of this floor plan is not guaranteed and no liability will be accepted for reliance placed on it.

DATE DRAWN : 7.11.2019

**Kildare House, Aldare Place, Fleetwood Avenue CLAREMONT UPPER**

AREAS SHEET 1/2

RESIDENCE - 651 m2  
 U/C ENCLOSED PATIO - 34 m2  
 DOUBLE GARAGE & STORE - 60 m2  
 Balconies - 55 m2



**FIRST FLOOR**

DATE DRAWN : 7.11.2019

Accuracy of this floor plan is not guaranteed and no liability will be accepted for reliance placed on it.

SHEET 2/2

**Kildare House, Aldare Place, Fleetwood Avenue CLAREMONT UPPER**