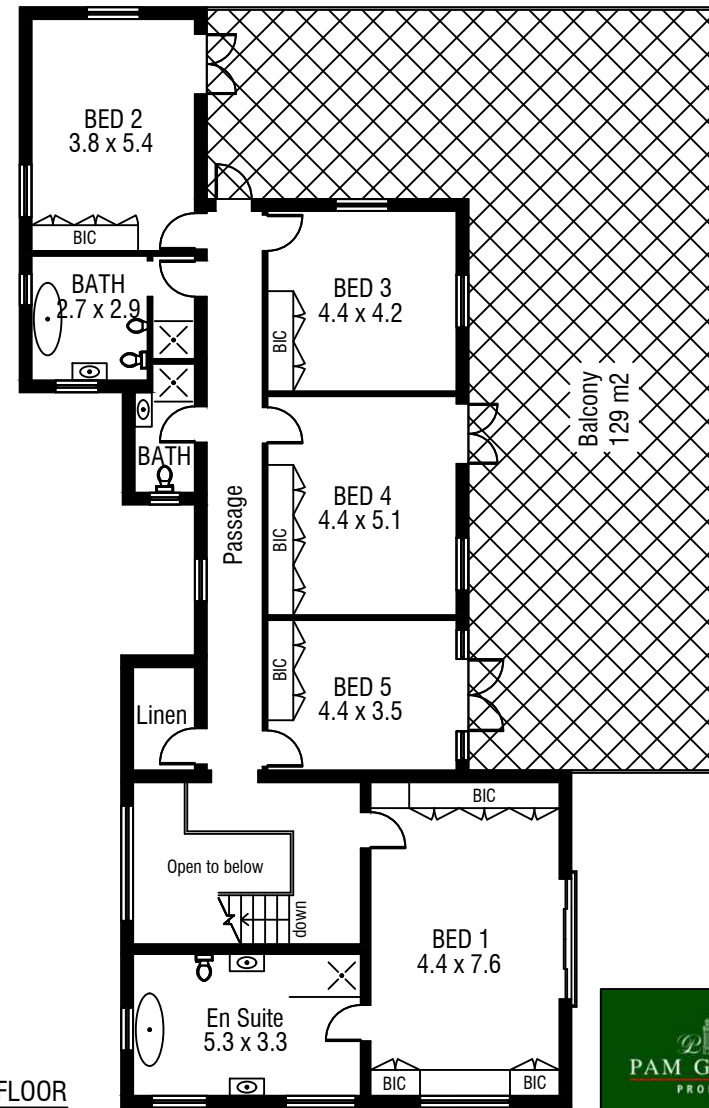
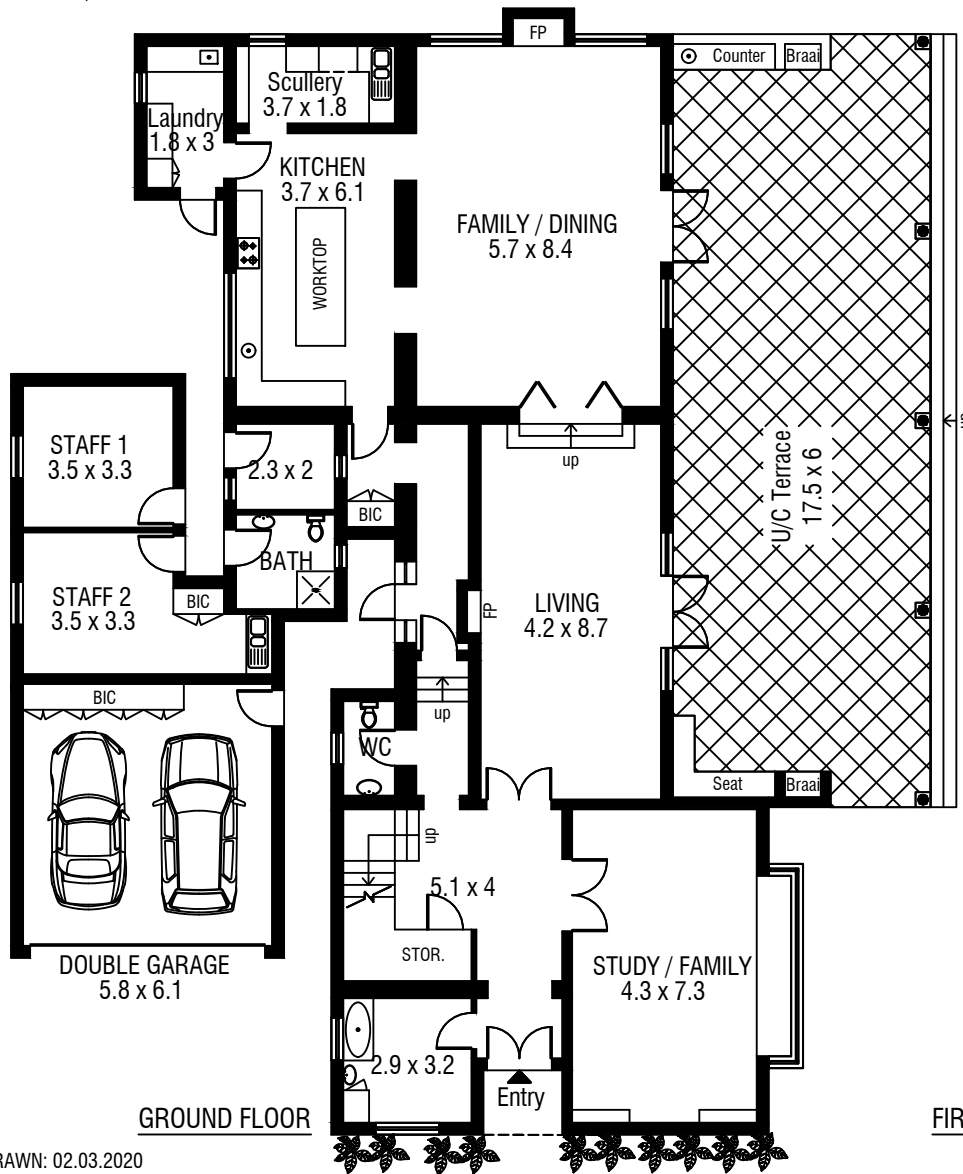


Accuracy of this floor plan is not guaranteed and no liability will be accepted for reliance placed on it.



DATE DRAWN: 02.03.2020

19 Upper Primrose Avenue

BISHOPSCOURT

GROUND & 1st FLOOR - 462 m2
DOUBLE GARAGE & STAFF - 86 m2

U/C Terrace - 105 m2
Balcony - 129 m2