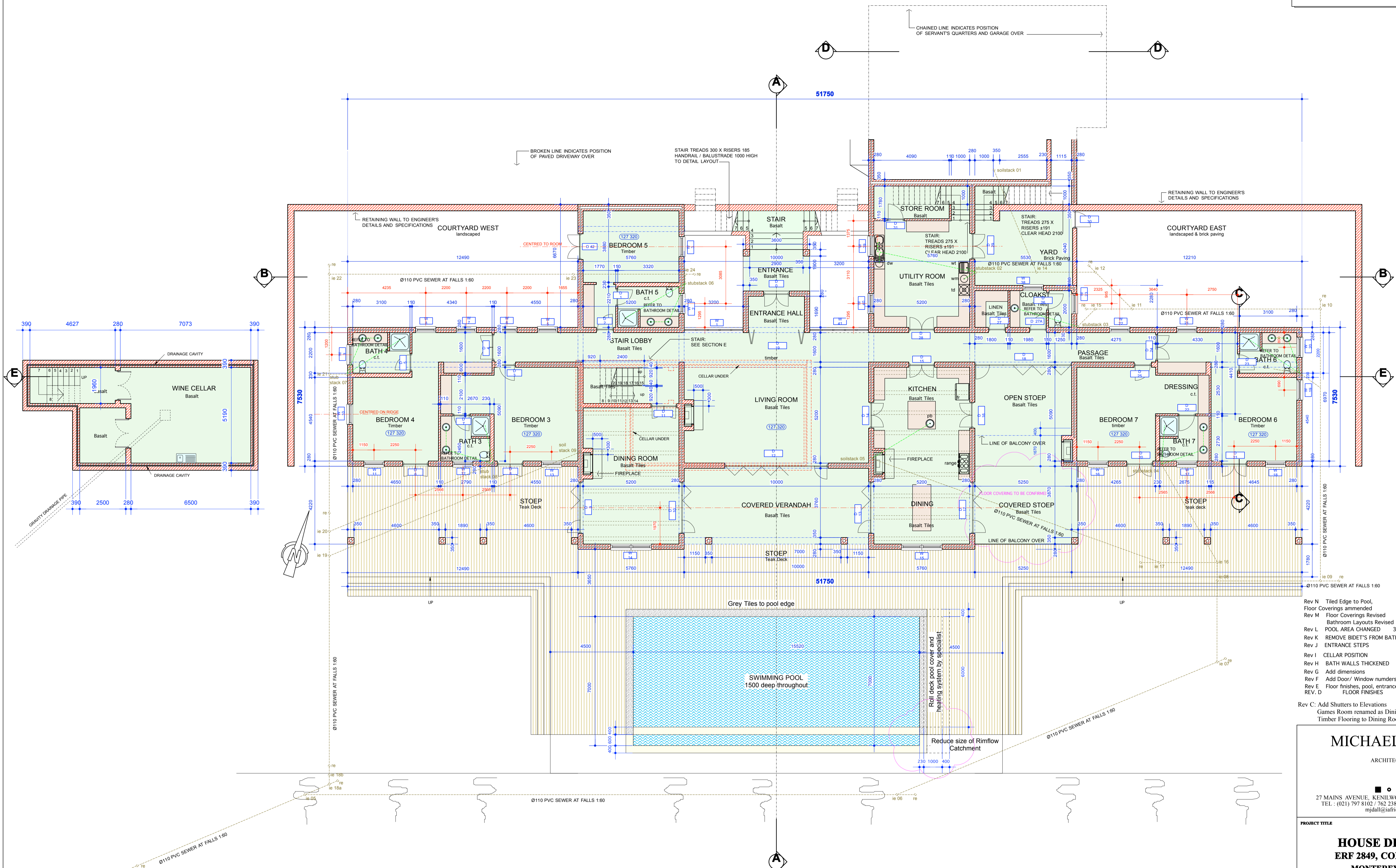


NOTE:
 ALL CHIMNEYS TO BE EQUIPPED WITH PATENT SPARK ARRESTORS BY SPECIALIST
 LIGHTNING CONDUCTOR INSTALLATION BY SPECIALIST



- Rev N Tiled Edge to Pool, Floor Coverings amended 26/03/08
- Rev M Floor Coverings Revised 14/03/08
- Rev L Bathroom Layouts Revised 30/01/2008
- Rev L POOL AREA CHANGED 15/01/2008
- Rev K REMOVE BIDETS FROM BATH 6 AND 7 12/11/2007
- Rev J ENTRANCE STEPS 13/08/2007
- Rev I CELLAR POSITION 25/07/2007
- Rev H BATH WALLS THICKENED 20/07/2007
- Rev G Add dimensions 18/06/2007
- Rev F Add Door/ Window numbers 13 FEB. 07
- Rev E Floor finishes, pool, entrance bedroom 7 11 May. 2007
- REV. D FLOOR FINISHES 13 FEB. 07

Rev C: Add Shutters to Elevations
 Games Room renamed as Dining Room
 Timber Flooring to Dining Room, Living Room and Study

MICHAEL DALL
 ARCHITECTS

27 MAINS AVENUE, KENILWORTH, CAPE TOWN. 7708
 TEL : (021) 797 8102 / 762 2383 FAX : (021) 797 7094
 mjhall@iafrica.com

PROJECT TITLE		
HOUSE DE BOER ERF 2849, CONSTANTIA MONTEREY DRIVE MUNICIPAL DISTRICT OF CAPE TOWN		
DRAWING TITLE		
MUNICIPAL SUBMISSION GROUND FLOOR PLAN		
DRAWN	DATE	SCALE
SL	DECEMBER 2006	AS INDICATED
JOB NO.	DWG. NO.	REVISION
44 / 06	02	N

GROUND FLOOR PLAN
 SCALE 1 : 100