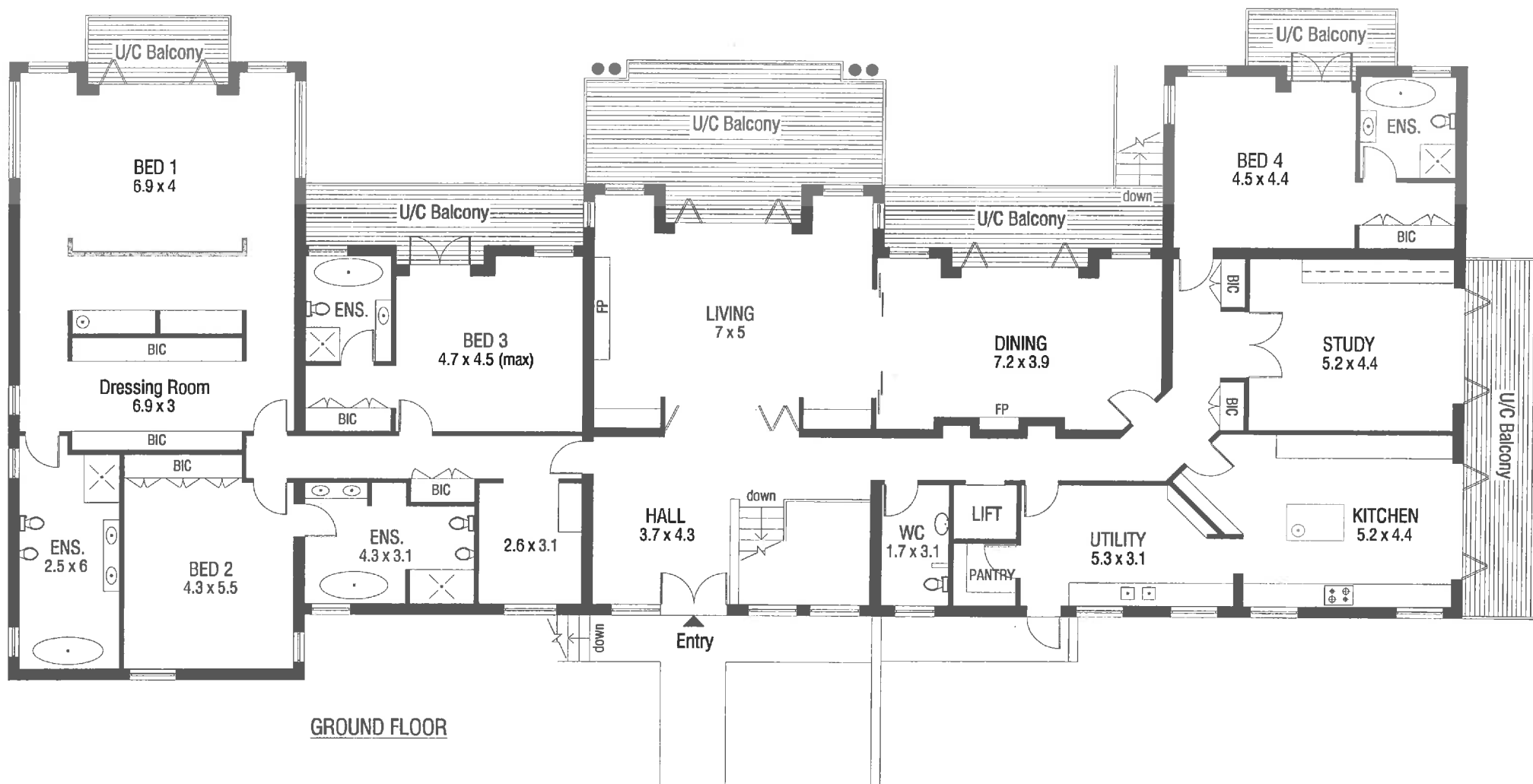


  
**PAM GOLDING**  
 PROPERTIES



**36 Bishopscourt Drive**

**BISHOPSCOURT**

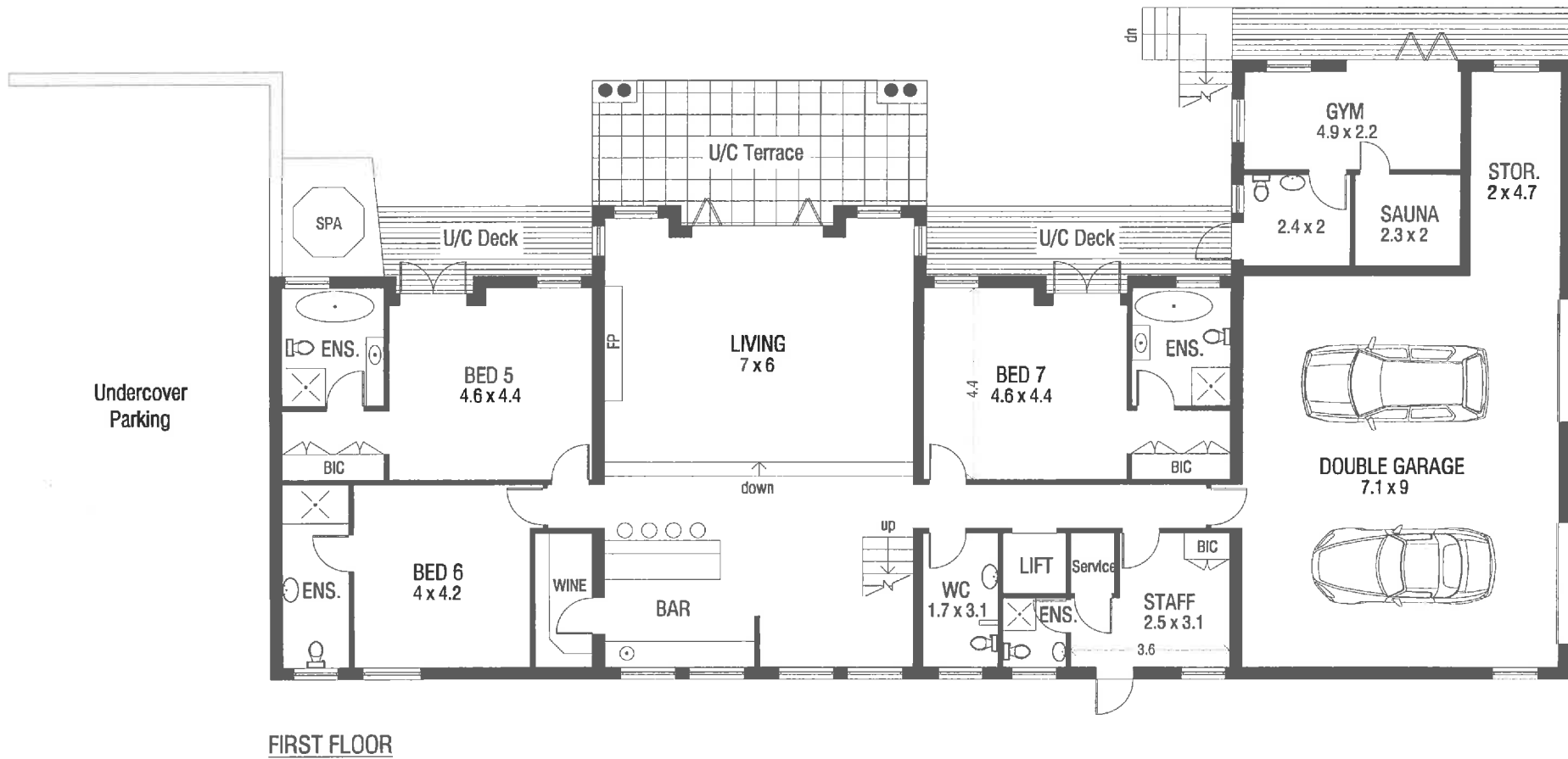
RESIDENCE - 675 m2  
GARAGE & STORE - 80 m2

**AREAS**  
U/C Terraces & Decks - 121 m2

**SHEET 1 of 2**

Accuracy of this floor plan is not guaranteed and no liability will be accepted for reliance placed on it.

  
**PAM GOLDING**  
 PROPERTIES



**36 Bishopscourt Drive**

**BISHOPSCOURT**